



S.2.19.

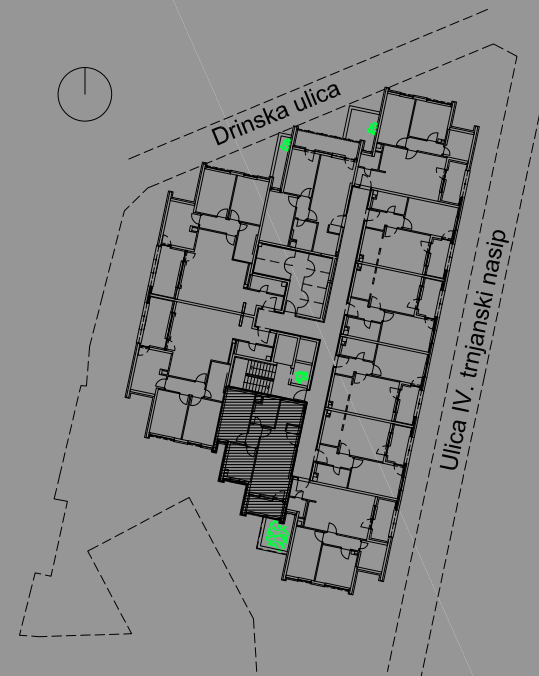
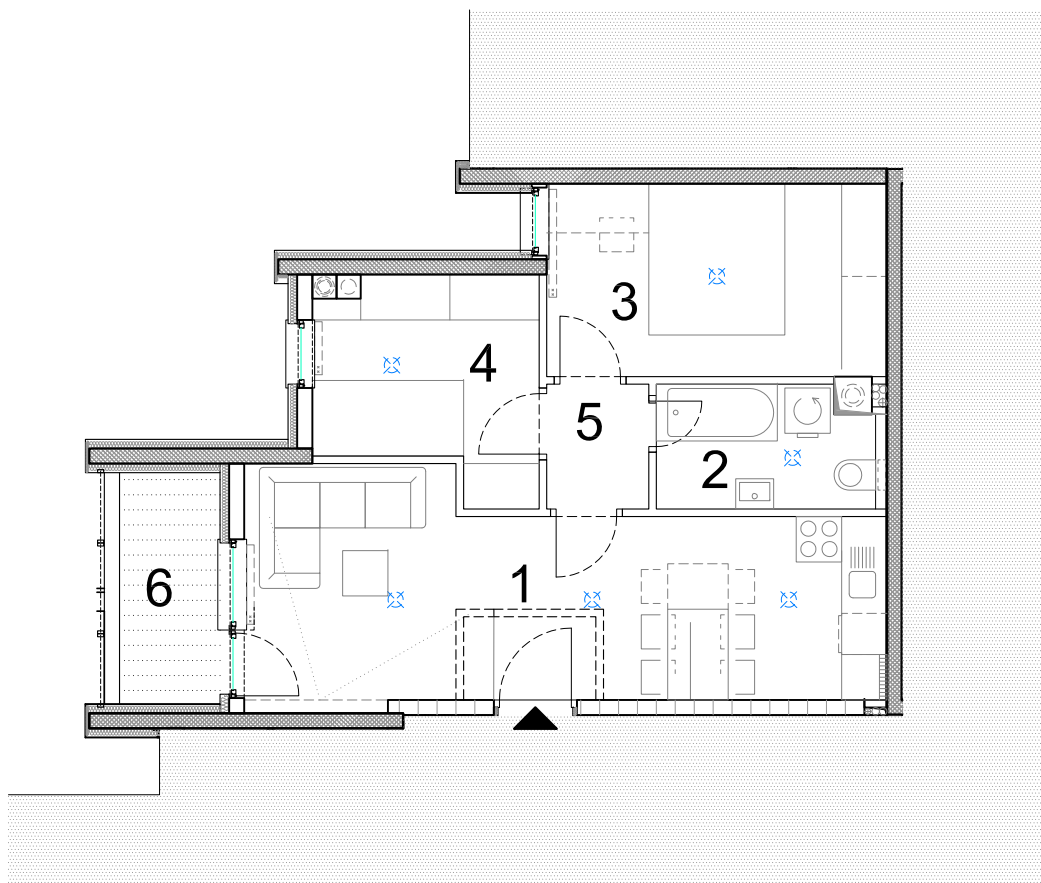
- trosobni -

**

2. KAT

ISKAZ NETTO POVRŠINE STANA:

1. dnevni boravak s kuhinjom	22,91m ²
2. kupaonica	4,75m ²
3. soba	11,48m ²
4. soba 2	7,70m ²
5. predprostor	2,23m ²
6. loggia	3,05m ²
UKUPNO:	52,12m ²



0 | 1 | 2 | 5 | m



NN BILIĆ d.o.o.