



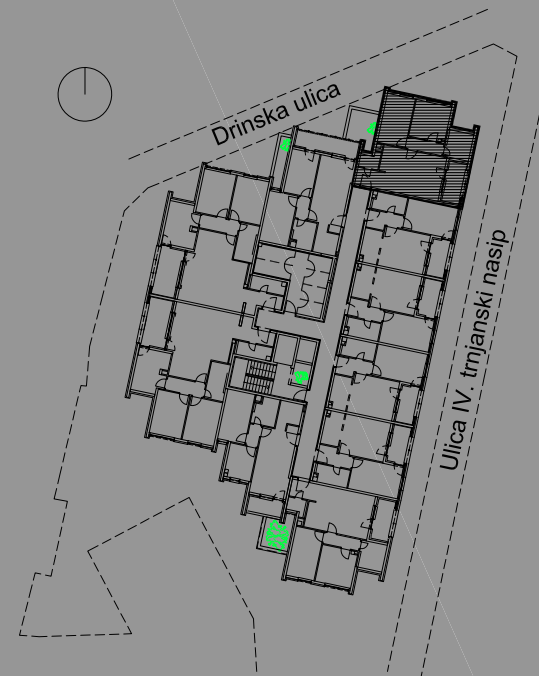
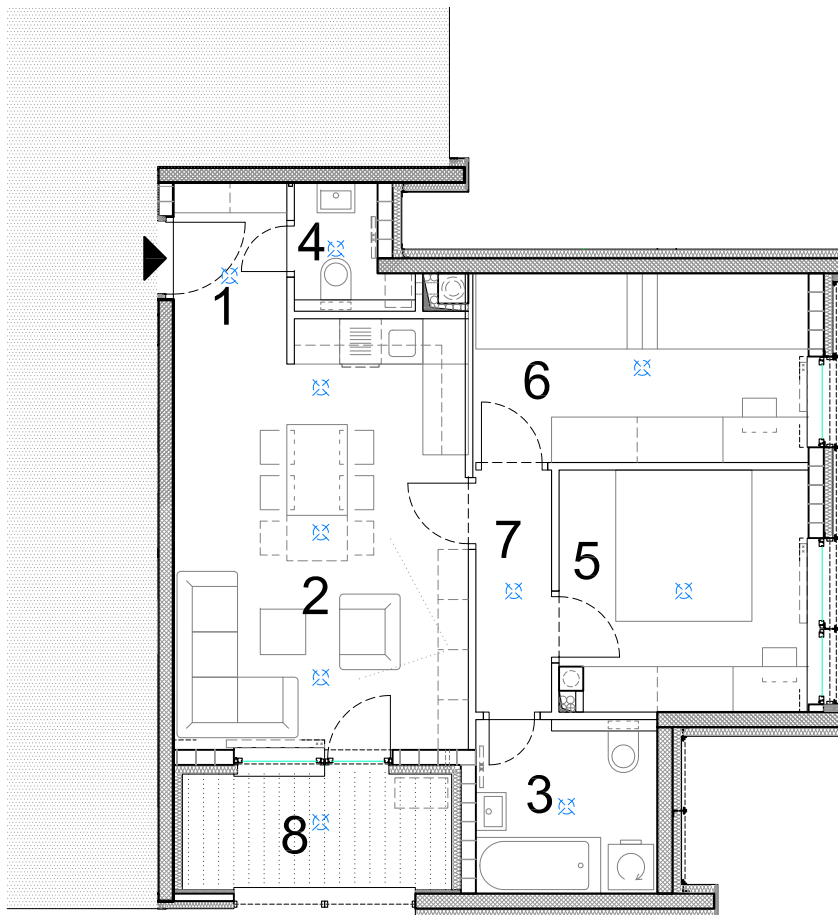
**S.2.25.**

- trosobni -

2. KAT

ISKAZ NETTO POVRŠINE STANA:

1. hodnik	2,70m <sup>2</sup>
2. dnevni boravak s kuhinjom	22,23m <sup>2</sup>
3. kupaonica	5,52m <sup>2</sup>
4. WC	2,12m <sup>2</sup>
5. soba	10,38m <sup>2</sup>
6. soba 2	11,00m <sup>2</sup>
7. predprostor	3,20m <sup>2</sup>
8. loggia	4,09m <sup>2</sup>
<b>UKUPNO:</b>	<b>61,24m<sup>2</sup></b>



0 | 1 | 2 | 5 | m



**NN BILIĆ** d.o.o.