



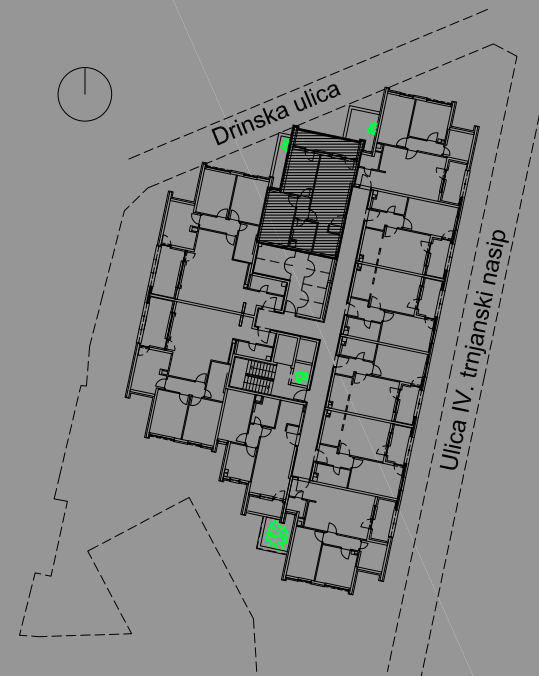
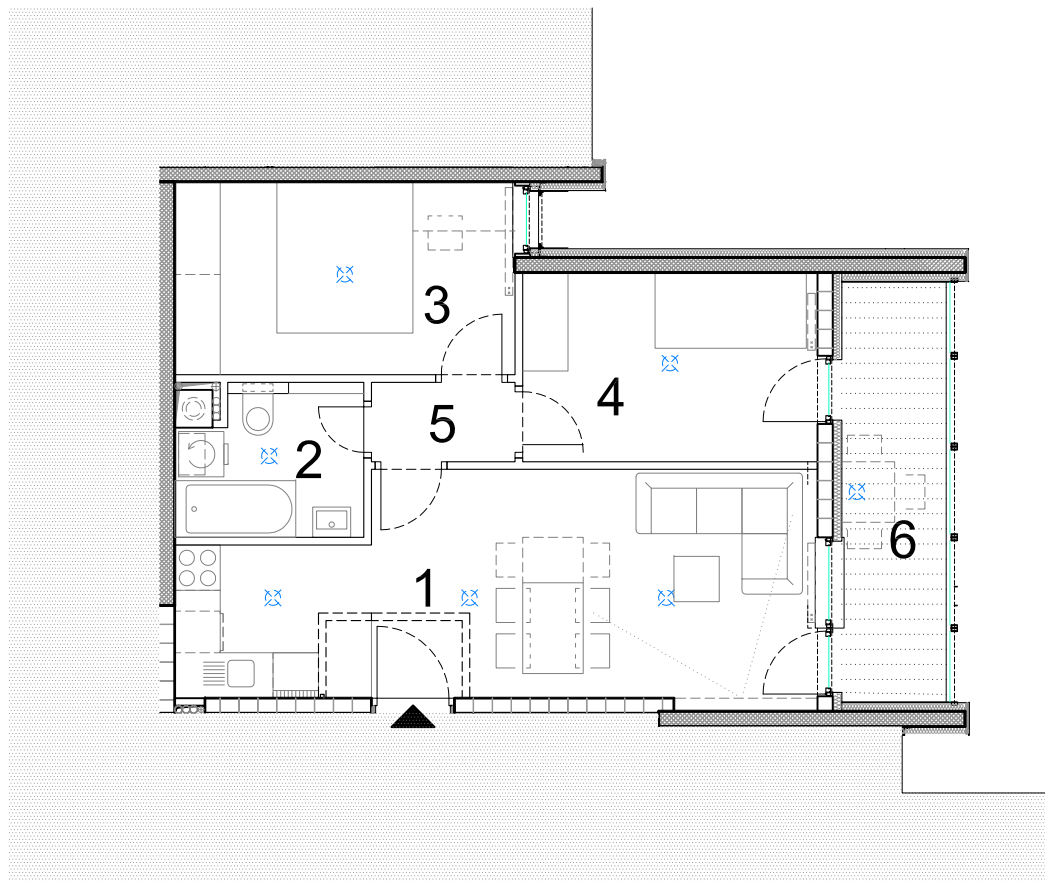
S.2.26.

- trosobni -

2. KAT

ISKAZ NETTO POVRŠINE STANA:

1. dnevni boravak s kuhinjom	23,45m ²
2. kupaonica	4,71m ²
3. soba	11,48m ²
4. soba 2	9,75m ²
5. predprostor	2,00m ²
6. loggia	6,05m ²
UKUPNO:	57,44m ²



0 | 1 | 2 | 5 | m



NN BILIĆ d.o.o.