



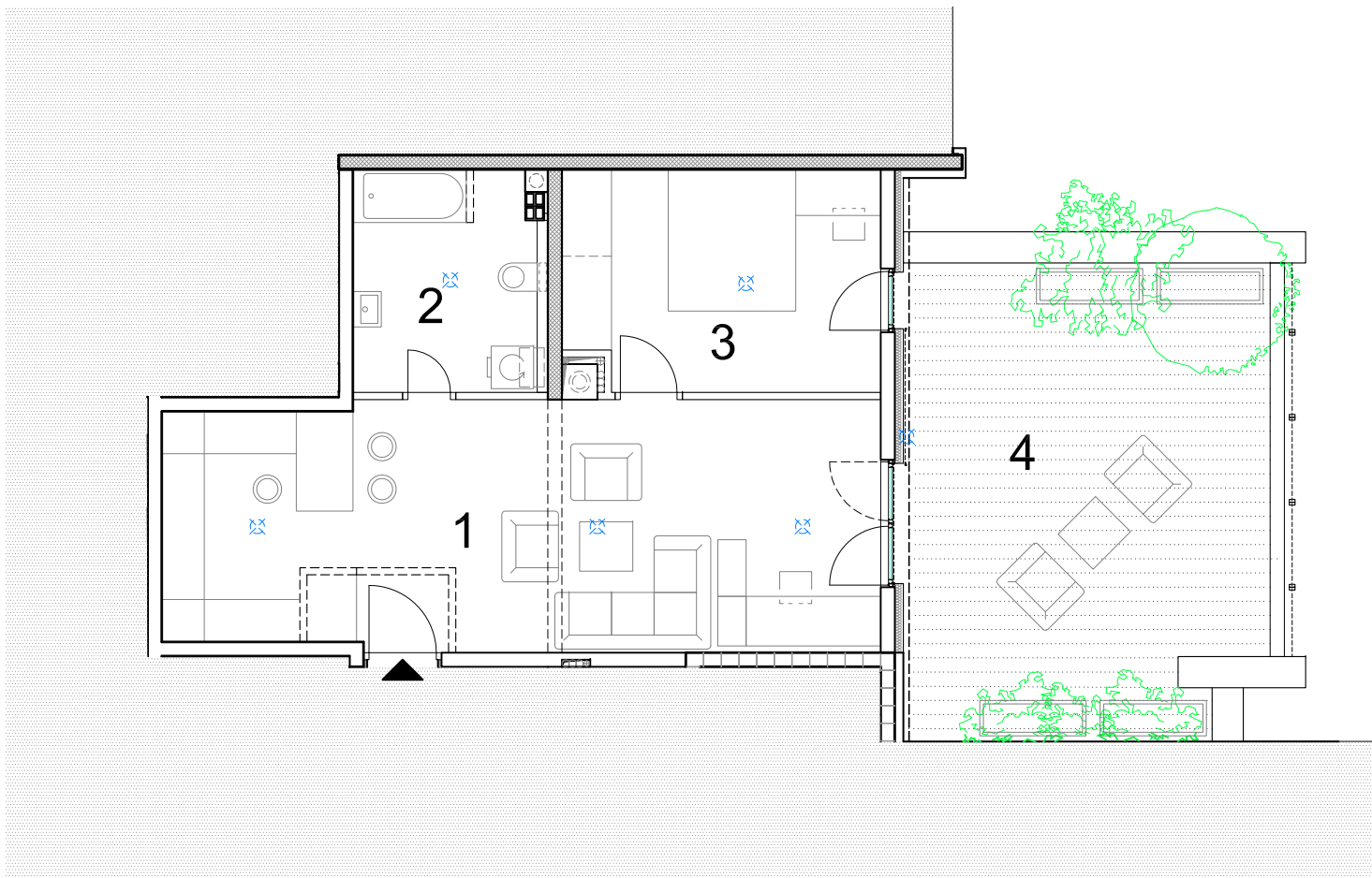
**S.3.33.**

- dvosobni -

3. KAT / POTKROVLJE

ISKAZ NETTO POVRŠINE STANA:

1. dnevni boravak s kuhinjom	35,41m <sup>2</sup>
2. kupaonica	8,43m <sup>2</sup>
3. soba	13,75m <sup>2</sup>
4. terasa	16,91m <sup>2</sup>
UKUPNO:	74,50m <sup>2</sup>



0 | 1 | 2 | 5 | m



**NN BILIĆ** d.o.o.