

GRAĐEVINA: STAMBENO-POSLOVNA ZGRADA

LOKACIJA: Ulica Ivane Brlić Mažuranić, Zagreb,
k.č. 4558/1, k.o. Vrapče

INVESTITOR: NNBilić, Ratarska 35, Zagreb



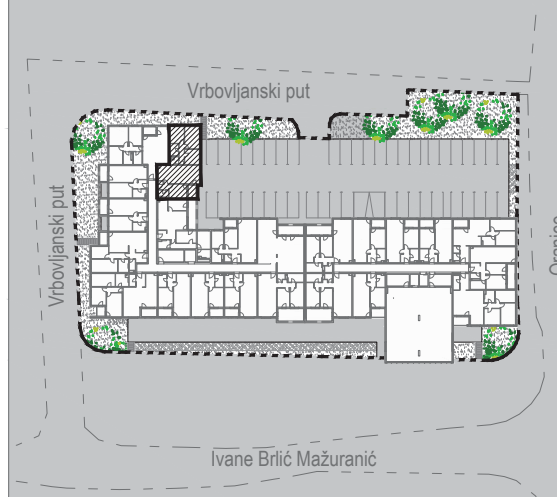
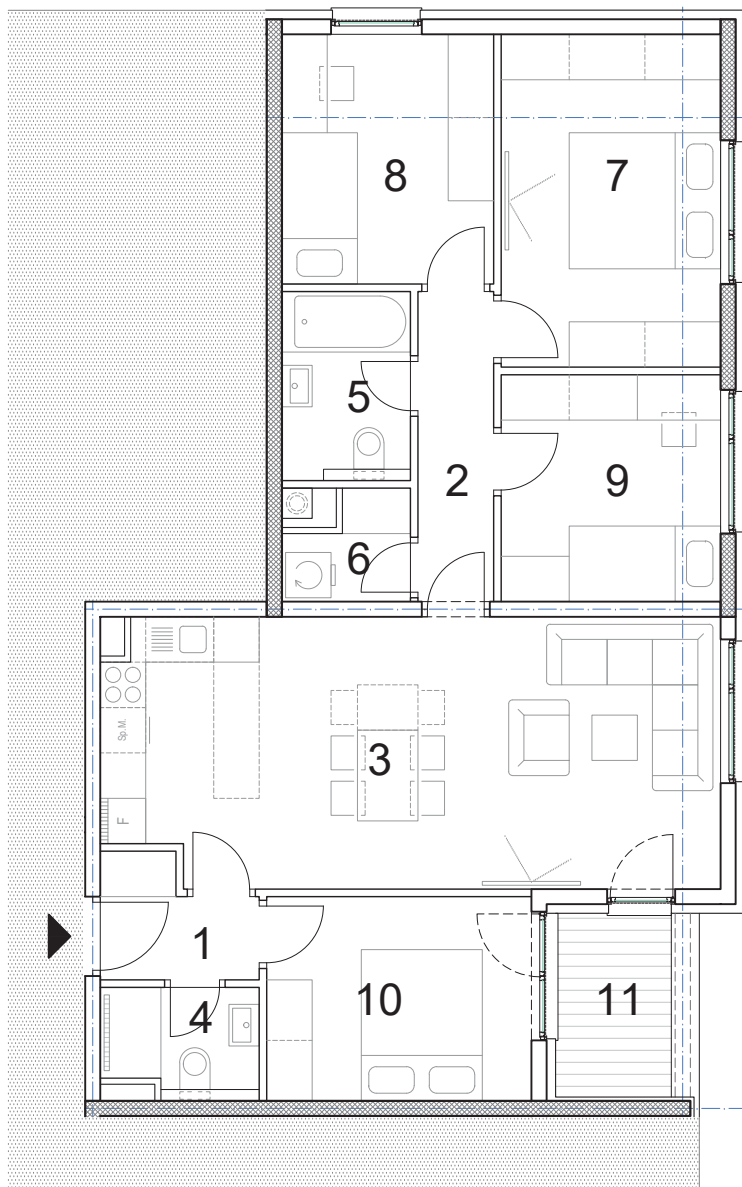
S.2.22.

- peterosoban -

2. KAT

ISKAZ NETTO POVRŠINE STANA:

1.	ulazni hodnik	2,91m ²
2.	predprostor	4,10m ²
3.	dnevni boravak s kuhinjom	28,62m ²
4.	kupaonica	2,91m ²
5.	kupaonica 2	4,25m ²
6.	praonica	2,07m ²
7.	soba	12,76m ²
8.	soba 2	9,24m ²
9.	soba 3	8,70m ²
10.	soba 4	9,45m ²
11.	loggia (x0,75)	2,79m ²
UKUPNO:		87,80m ²



0 | 1 | 2 | 5 | m



NN BILIĆ