

GRAĐEVINA: STAMBENO-POSLOVNA ZGRADA

LOKACIJA: Ulica Ivane Brlić Mažuranić, Zagreb,  
k.č. 4558/1, k.o. Vrapče

INVESTITOR: NNBilić, Ratarska 35, Zagreb



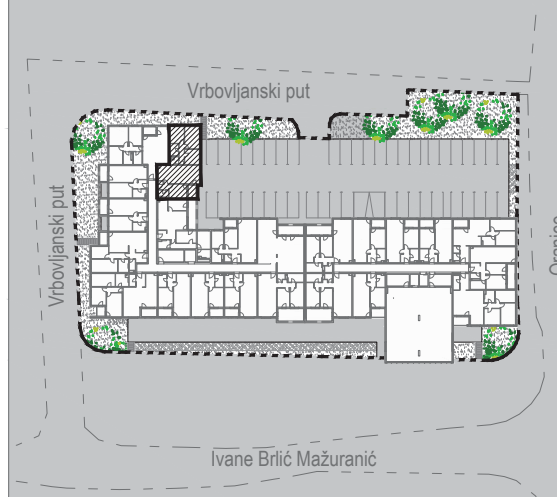
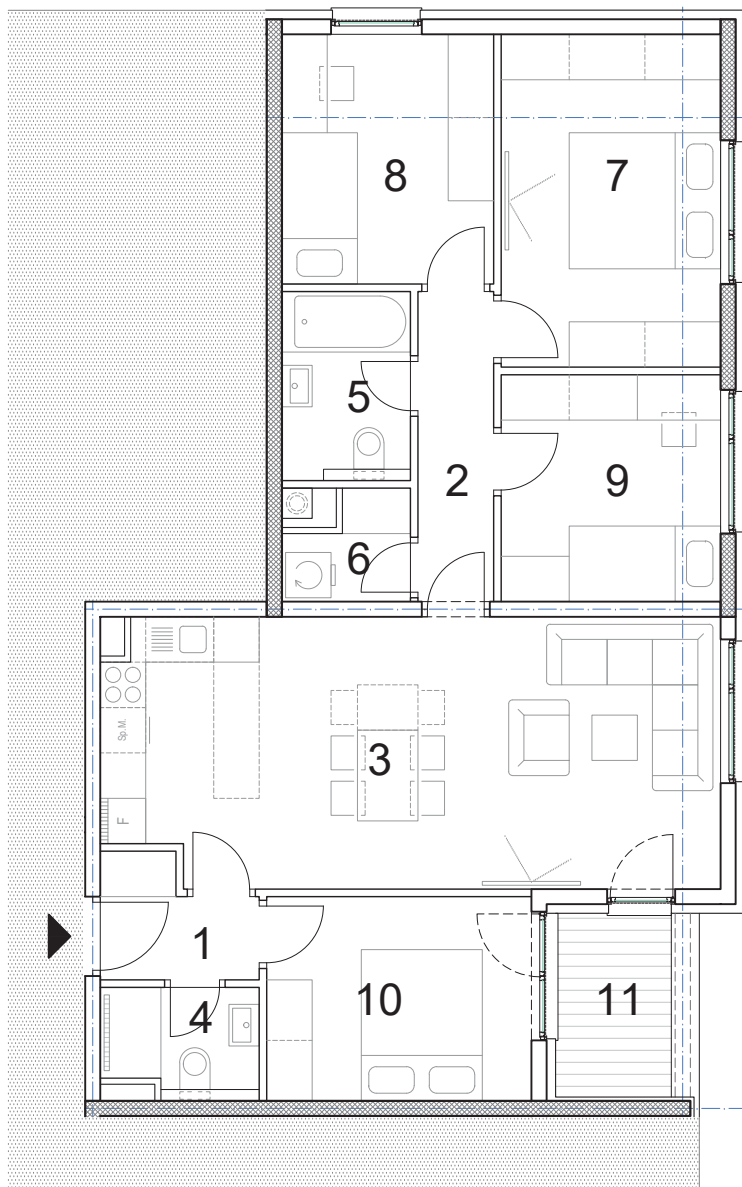
**S.3.35.**

- peterosoban -

3. KAT

ISKAZ NETTO POVRŠINE STANA:

1.	ulazni hodnik	2,91m <sup>2</sup>
2.	predprostor	4,10m <sup>2</sup>
3.	dnevni boravak s kuhinjom	28,62m <sup>2</sup>
4.	kupaonica	2,91m <sup>2</sup>
5.	kupaonica 2	4,25m <sup>2</sup>
6.	praonica	2,07m <sup>2</sup>
7.	soba	12,76m <sup>2</sup>
8.	soba 2	9,24m <sup>2</sup>
9.	soba 3	8,70m <sup>2</sup>
10.	soba 4	9,45m <sup>2</sup>
11.	loggia (x0,75)	2,79m <sup>2</sup>
UKUPNO:		87,80m <sup>2</sup>



0 | 1 | 2 | 5 | m



**NN BILIĆ**